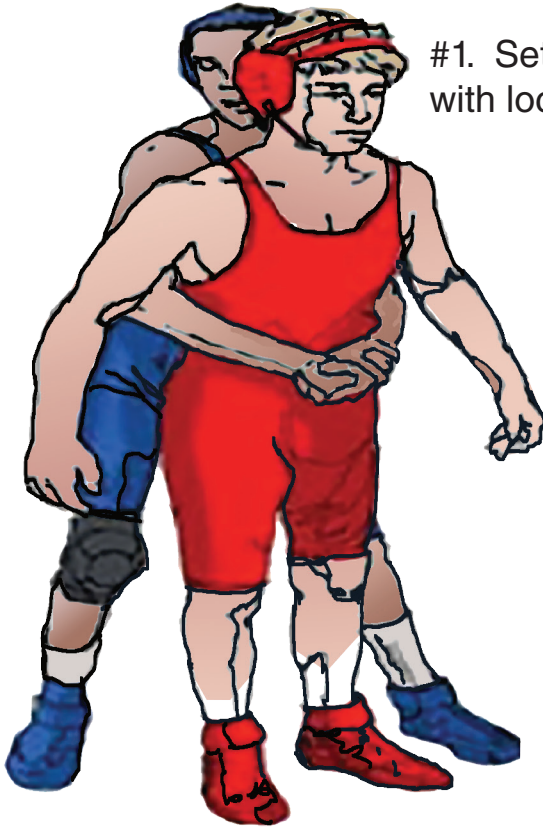


Straight-Back Suplay to the Head and Shoulders—**ILLEGAL** A

Rule 7-1-2

A full, straight-back suplay
and straight-back Salto,
ILLEGAL

#1. Set-up, chest to back
with locked hands...

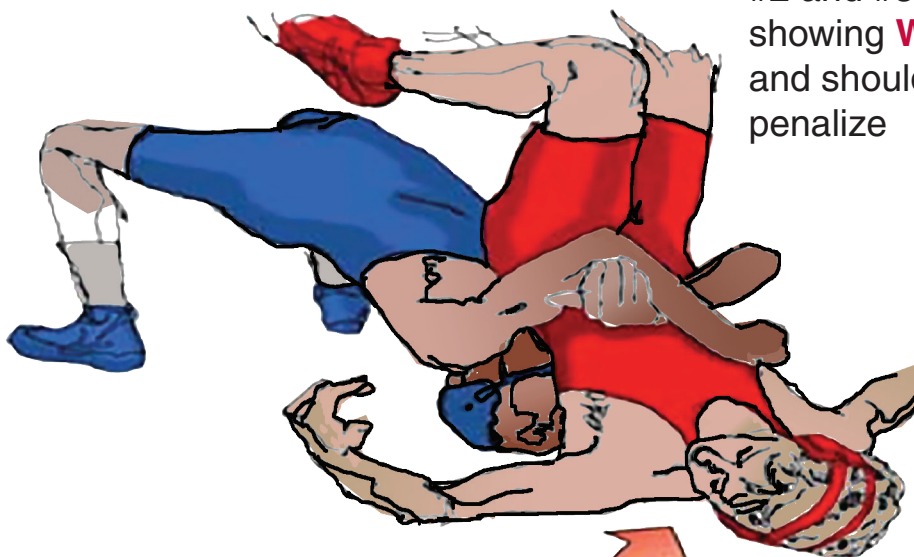


#2. **WRESTLER B** initiates
move by stepping inw/tight
hips to back of **WRESTLER A**
and arches back and lifts
straight back over the top.



#3. **WRESTLER A** is defenseless in
this throw and cannot protect
himself...

#2 and #3 viewed from two angles.each
showing **WRESTLER A's** head, neck
and shoulders hitting first. **ILLEGAL**
penalize



NOTE: Also places **WRESTLER A**
in **POTENTIALLY DANGEROUS**
peril.

ILLEGAL due to head/neck (spine) and
shoulder forcefully landing