

2020 ALTERNATE FALL *State Tournament* 2021



Individual Tournament: April 22-23, 2021 *Team Tournament: May 1, 2021*
Lake Geneva Tennis Club & Badger High School *Menard Tennis Center, Eau Claire*



BUILT WITH
CHOCOLATE MILK

RECOVER

LIKE A CHAMPION

**NUTRIENTS TO REFUEL.
NATURAL PROTEIN TO REBUILD.
BACKED BY SCIENCE.**



GET THE PROOF >
BuiltWithChocolateMilk.com



official beverage of the WAA

**DAIRY FARMERS
—OF—
WISCONSIN**

© 2019 Dairy Farmers of Wisconsin

2020-21 Alternate Fall State Girls Tennis Tournament



Individual Championship Schedule

Badger H.S. & Lake Geneva Tennis Club

THURSDAY, APRIL 22

8:45 a.m. Matches Called
9 a.m. First Round, Second Round and Quarterfinal Matches

FRIDAY, APRIL 23

8:15 a.m. Matches Called
9 a.m. Consolation Semifinals
Championship Semifinals – Singles
Championship Semifinals – Doubles
5th Place, 3rd Place and Championship Matches To Follow

Order of matches are shown by the numbers indicated for each match in the graphic format of singles and doubles on pages 8 & 9 of this program.

Team Championship Schedule

Menard Tennis Center (Eau Claire)

(Matches called 15 minutes prior to start times noted below.)

All photos courtesy of VIP

Results available on WIAA website www.wiaawi.org

#1 Neenah (15-0)

Saturday, May 1 – 9 a.m.

#4 Verona Area (9-6)

#2 Middleton (7-2)

Saturday, May 1 – 11 a.m.

#3 Ashwaubenon (8-3)

Saturday, May 1
1:30 p.m.

**2020-21 ALTERNATE
STATE CHAMPION**

Awards Presentation

At the conclusion of the tournament, awards will be available at the registration table.



@wiaawi
@wiaawistate
#wiaatennis



wiaawi

The WIAA requires good sportsmanship at education-based sporting events.

Attendance at interscholastic activities is a privilege with the expectation to exhibit positive and respectful behavior. For the enjoyment and respect of all in attendance, your cooperation in demonstrating the high ideals of sportsmanship is expected and greatly appreciated.

Welcome to the Girls Tennis Culminating Event



Friends,

2020-21 has been a challenging year for all of us. It has been particularly challenging to our member schools and the students they serve. The fact that we are enjoying this culminating event for the girls tennis alternate fall season is a tribute to the school leaders, athletic directors and coaches who have "willed" this to happen.

This event also serves as a tribute to the dedication, determination and resolve of the young people competing here today; as well as to all the high school athletes who have confronted the disappointments and frustrations of all that has engulfed them in recent months and have risen above every obstacle and adversity.

Lastly, we must recognize and thank all the parents and fans who have "masked-up", observed distancing and mitigating protocols in order to give kids, schools and coaches this chance to get back together, to compete in the sports and activities they love and have missed.

Thank you to all who have contributed in both great and small ways, because it has taken all of us to bounce back this far.

We have a way to go yet. But with your help and all of us continuing to work together, there can be hope!

Sincerely,

David J. Anderson
Executive Director



WIAA Provides Opportunities; Structure . . .

The Wisconsin Interscholastic Athletic Association (WIAA) is a voluntary, unincorporated, and nonprofit organization. The Association membership has a diversified membership of public high schools, nonpublic high schools, public middle schools, and nonpublic middle schools. Its purpose is to organize, develop, direct and provide interscholastic athletics for member schools.

There are 514 senior high schools affiliated with the WIAA. The estimated number of student-athletes in athletics is 80,000-85,000 annually.

Governance of the WIAA is performed by the member schools. Rules and policies of the Association are developed, promulgated and implemented by the membership either through membership vote for constitutional issues or through a membership-elected committee structure for sport seasons regulations. Therefore, ownership of the membership's rules and regulations, as well as the responsibility of compliance with them, lies with each member school.

The Development of Rules . . .

As fans watch the games during the tournament, some wonder how the rules of the game and of the WIAA were created.

- ◆ The National Federation of State High School Associations is the authority of the competition rules for sport contests (i.e. uniforms, length of contest, game rules). As a member of the NFHS, the WIAA adheres to those rules as a member in good standing. The WIAA, as well as all state associations in the NFHS, has input with an advisory role in the review and promulgation of the playing rules. The NFHS office is located in Indianapolis, Indiana.
- ◆ For changes to the membership's Constitution, Bylaws and Rules of Eligibility, a vote of the entire membership is required at the Annual Meeting each spring. The Constitution contains information relating to the Association as an organization. The Bylaws encompass information relating to member high schools' responsibility concerning WIAA rules and regulations. The Rules of Eligibility embody information relating to the relationship of the student-athlete to the high school and the WIAA.
- ◆ The Board of Control has the ultimate authority in determining the outcome of sport seasons rule recommendations and regulations. Changes to the sport seasons regulations are advanced through the democratic committee structure. Among the advisory groups that provide input to the Board are the coaches advisory committees for each sport; the sports advisory committee, comprised of school athletic directors from each of the seven districts; the Advisory Council, consisting of school administrators from each elector district; and the executive staff. Other groups with advisory responsibilities include the Medical Advisory Committee, Sportsmanship Committee and the Officials Advisory Committee. The Season Regulations address, among other topics, definition of the sports seasons, participation, contest control and tournament procedures.

Currently, the Association sponsors 24 sports including baseball, basketball, cross country, 8-player, 11-player football, golf, hockey, soccer, swimming & diving, tennis, track & field, volleyball and wrestling for boys; and basketball, cross country, golf, gymnastics, hockey, soccer, softball, swimming & diving, tennis, track & field and volleyball for girls.



Board of Control



Eric Russell
Baldwin-Woodville
President



Mike Beighley
Whitehall



Willy Chambers
Black Hawk



Phil Ertl
Wauwatosa



Mike Humke
Dodgeville



Karl Morrin
Menominee Indian



Bernie Nikolay
Cambridge



Paul Pedersen
Regis



Dave Steavpack
Manitowoc Lincoln



Jennifer Vogler
Sturgeon Bay



Scott Winch
Stratford

Executive Office



Dave Anderson
Executive Director



Wade Labecki
Deputy Director



Tom Shafranski
Assistant Director



Stephanie Hauser
Assistant Director



Kate Peterson Abiad
Assistant Director



Kassie Mortimer
Assistant Director



Todd Clark
Communications
Director

Advisory Council



Jim Brewer
Clinton



Eric Coleman
Milwaukee Public Schools



Greg Doverspike
Durand-Arkansaw



Michael Endreas
Spencer



Scott Fritz
Howards Grove



Cari Guden
Edgar



Matt Hendrickson
Madison Memorial



Cory Hinkel
Luck



Ted Knutson
Aquinas



Cory Kulig
Eleva-Strum



Kyle Luedtke
Sevastopol



Chris Nelson
Iola-Scandinavia



Craig Olson
Hayward



Dan Retzki
Green Bay Preble



Roger Rindo
Oconomowoc



Brian Schlei
Waukesha North



Terrance Slack
Wisconsin Dells



Chris VanderHeyden
Menasha



CLASH IS CONFIDENCE

ON-COURT CONFIDENCE IS ABOVE ALL ELSE. CLASH INSTILLS THAT
CONFIDENCE WITH A PLAYING EXPERIENCE LIKE NO OTHER.
THE ONLY WAY TO FIND OUT? TRY IT.

THERACKETREVOLUTION.COM



Qualifying Procedures

In 2020-21 alternate fall, 42 schools are sponsoring girls tennis.

Individual Tournament

Participants who finished first through fourth in Flight 1 singles and doubles and first in Flight 2 singles and doubles in sectional competition qualified automatically for the 2020 WIAA Individual Tennis Tournament. Chosen by the state seeding committee eight additional singles and doubles teams.

Twenty-eight singles and doubles teams will be participating. Medals will be presented to the top six finishers in singles and doubles following the completion of play on Friday.

Subsectional and sectional tournaments provided both individual qualifiers for this tournament and provided the teams for next week's team tournament. Teams who won their sectional, by scoring the most points through subsectionals and sectionals, will participate in the State Team Tournament to be held next weekend at Menards Tennis Center – Eau Claire on Saturday, May 1.

Team Tournament

Teams were allowed to enter a total of 10 players at the subsectional level in this year's flighted tournament. Four flights of singles and three flights of doubles have enabled more athletes to participate in the WIAA tennis tournament program. Previously, schools were allowed to enter only two singles players and two doubles teams. The addition of flights has allowed coaches to include their regular season players into the tournament structure.

Tennis Coaches Advisory Committee

Lindsay Matuszewski, Bay Port

Jim Matousek, Brown Deer

Jim Litscher, Eau Claire Memorial

Ryan Reischel, Madison West & Sun Prairie

Kyle Seyer, Regis

Andy Address, Hartford Union (Coaches Association Representative)

Girls State Seeding Committee

Amy Kahl, Stoughton

Jim Litscher, Eau Claire Memorial

Lindsay Matuszewski, Bay Port

Ryan Reischel, Madison West

Teams will be playing dual meets to determine who will advance to the championship round. The team scoring the most individual flight wins will advance to the next level of competition. The order of play at the State Team Tennis Tournament will be: #4 Singles, #3 Doubles, #3 Singles, #2 Doubles, #2 Singles, #1 Doubles, #1 Singles. The brackets were designed via a seeding meeting with all the participating coaches.

Awards will be available following the completion of the championship matches on Friday afternoon. Medals and trophies will be available to both teams competing in the championship match.



ANDERSON O'BRIEN
BERTZ, SKRENES & GOLLA, LLP ATTORNEYS SINCE 1886

- Accident & Personal Injury
- Banking & Commercial Law
- Business & Corporate Law
- Divorce & Family Law
- Elder Law & Guardianships
- Employment & Labor Law
- Litigation & Dispute Resolution
- Probate & Trust Settlements
- Real Estate
- Tax Planning
- Wills, Trusts, & Estate Planning
- Workers' Compensation

715-344-0890 | andlaw.com
1257 Main Street, Stevens Point, WI 54481



Tournament Personnel



**WIAA
Tournament
Manager**
Tom Shafranski

Individual Badger H.S. & Lake Geneva Tennis Club

Meet Manager – Jim Kluge
Rose Dolatowski

Meet Referee – Sharon Terry

Team Menards Center (Eau Claire)

Meet Manager – Jim Litscher
Meet Referee – Sharon Terry

Umpires

Doug Knutzen
Fond du Lac

John Shanahan
Sturgeon Bay

Sharon Terry
Janesville

Adriane Welker
Elgin (IL)

PROUD SPONSOR OF THE WIAA/ RURAL MUTUAL SPORTSMANSHIP AWARD



*“When you’re faced with a challenge,
how you respond determines the real winner.”*

Rural Mutual Insurance has been a sponsor of the WIAA/Rural Mutual Insurance Sportsmanship Award since it was started in 1965.

We believe there’s something more important than just winning or losing a tournament. We believe that the team, school, and fans who support their athletes with dignity and class are the true champions.



Visit us to learn more at www.RuralMutual.com/wiaa

Rural Mutual
Insurance Company



State Preview

SINGLES NOTES: The alternate season singles bracket is comprised of 28 competitors. Four of the top five seeds in the tournament are freshmen. The top seed was issued to junior Ava Dunsirn of Neenah. She enters play in the State Tournament with a 15-0 record this season. Dunsirn gained State experience by qualifying last season, which resulted in a loss in the first round. Freshman Lily Olson of Madison Memorial is the #2 seed with a 5-0 record in a limited number this spring. Freshman Olivia Minikel of Manitowoc Lincoln has compiled a 14-1 record this season and is the third seed in the tournament. Freshman Annalise Yang of Madison La Follette is seeded fourth with her 6-1 record. Freshman Netra Somasundaram of Middleton is the #5 seed with her 10-2 record, and junior Molly Hower of Eau Claire Memorial is seeded sixth with a 14-3 mark this season. The seventh seed is sophomore Sophie Fergus of De Pere. She has compiled a 12-4 record this season, and senior Annika Goetz of Stoughton is the eighth seed with an undefeated 11-0 mark. Freshman Nora Paape of Neenah is also undefeated this season at 16-0, and she has been identified as the ninth seed.

DOUBLES NOTES: The alternate season bracket includes 28 duos. The top seed is the tandem of senior Grace Welhouse and freshman Alex Madjun of Appleton North. They have posted a 10-1 record this season heading into State Tournament play. Junior Sophia Paape and sophomore Shelby Roth of Neenah are seeded second in the bracket with an 11-1 record. Roth qualified with a different partner in 2019 to win her first-round match before falling in the second round. Seniors Karsen Dettman and Noor Rajpal of Middleton are seeded third with a limited number of matches on their slate this season at 5-0. Dettman advanced all the way to the championship match in 2018 with a different partner to finish runner-up. Rajpal is a four-time qualifier in doubles play. She teamed up with the same partner her first three years. They advanced to the third round in 2019 and to the second round of play in both 2017 and 2018. Seniors Tristyn

Lueck and Audrey Ochsner of De Pere are the #4 seed. They qualified as a tandem last year and fell in their opening-round match. The fifth-seeded duo is sophomore Liz Risgaard and freshman Annalise Zenzick of Neenah. They enter play undefeated in a limited number of matches at 8-0. Senior Lexi Bubzinski and junior Katie Rentzepis of Eau Claire Memorial are the sixth seed with their 15-4 mark this season. Rentzepis has State experience after qualifying with a different partner last season, which resulted in a loss in the opening round. The seventh-seeded pair is seniors Elsie Steimle and Kendra Peterson of Manitowoc Lincoln with a record of 13-2. Peterson qualified for State in 2019 in the singles bracket. She fell to her first-round opponent. Senior Sophia Knigge and junior Abby Lin of Madison West are seeded eighth with a 4-2 record this season. Knigge advanced to the quarterfinals in 2019 with a different partner after advancing to the second round with the same partner in 2018. Senior Jessica Jiang and freshman Sophia Jiang of Madison Memorial are seeded ninth with a 4-1 record.

ABOUT THE TEAM TOURNAMENT FIELD: **Neenah** is the top seed in the bracket. The Rockets have qualified for the 18th time and essentially for the ninth consecutive season, qualifying in the traditional fall season from 2012-19. They won the State team title in 2015. They have also compiled six runner-up finishes, including two before the start of the team tournament in 1983 and 1986, and in the team tournament in 2000, 2014, 2016 and 2017. **Middleton** is the #2 seed. The Cardinals are making their eighth appearance overall and their first since 2014. They won the Division 1 championship in 2013. Third-seeded **Ashwaubenon** qualifies for the tournament for the second time after making its initial appearance in 2019, which resulted in a defeat in the quarterfinals. The fourth seed is **Verona**. The Wildcats are making their third appearance in the State Team Tournament and the first since 2002. The two previous experiences at State have resulted in quarterfinal losses.

2021 WIAA State Girls Individual Tennis Tournament Dates – October 14-16, 2021
2021 WIAA State Girls Team Tennis Tournament Dates – October 22-23, 2021

TRUE CHAMPIONS

*may be celebrated for their trophies and titles,
but they are always remembered for their heart.*

**WIN AS ONE.
GOOD LUCK TO ALL.**



DINE • SHOP • TOUR • VISIT
BOOK AN EVENT

PACKERS.COM

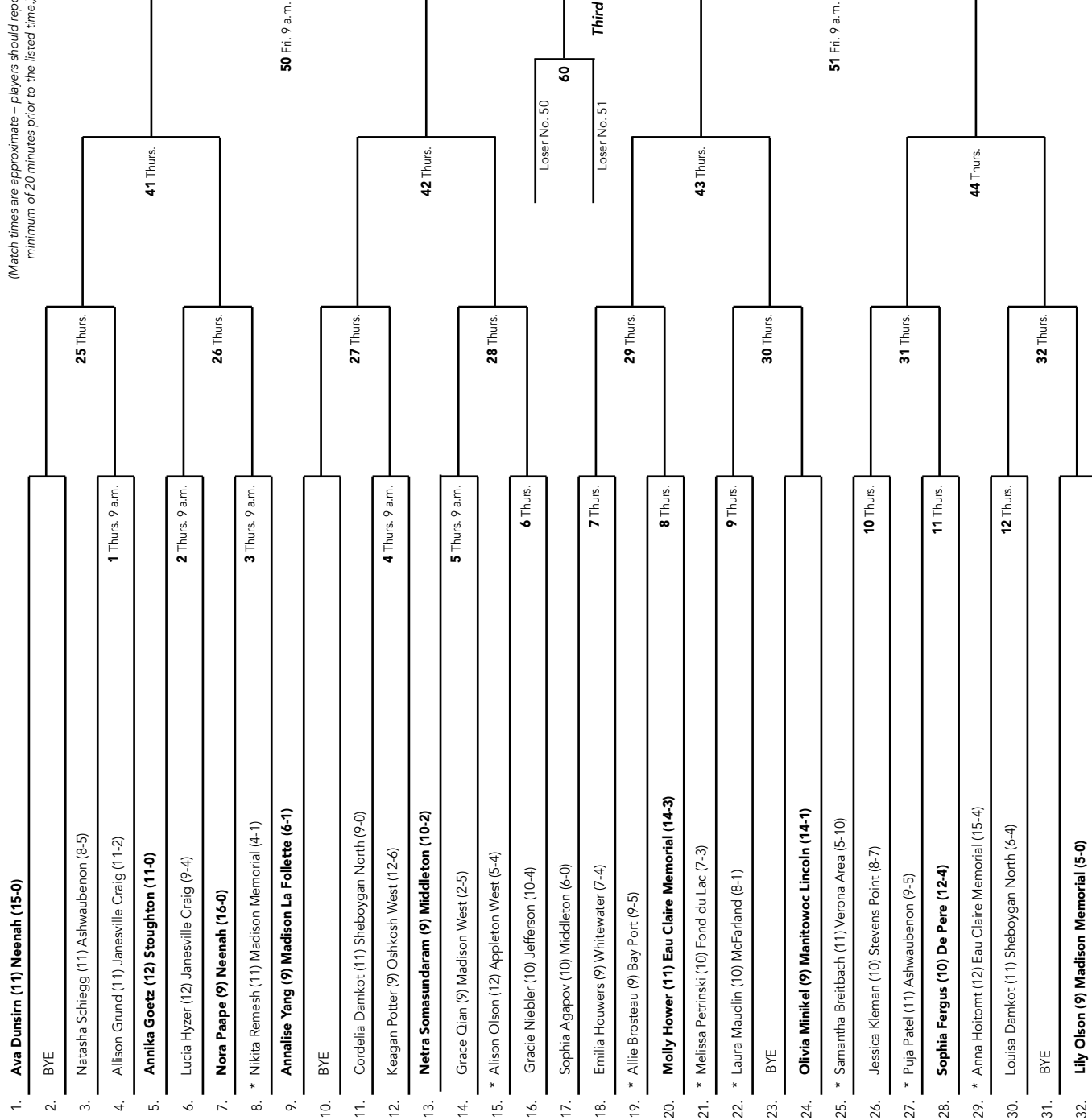
SINGLES

Please check tennisreporting.com for all unlisted match times.

SEEDED PLAYERS

1. Ava Dunsirn, Neenah
2. Lily Olson, Madison Memorial
3. Olivia Minikel, Manitowoc Lincoln
4. Annalise Yang, Madison La Follette
5. Netra Somasundaram, Middleton
6. Molly Hower, Eau Claire Memorial
7. Sophia Fergus, De Pere
8. Annika Goetz, Stoughton
9. Nora Paape, Neenah

(Match times are approximate – players should report a minimum of 20 minutes prior to the listed time.)



* Special Qualifiers

DOUBLES

Please check tennisreporting.com for all unlisted match times.
All doubles matches played at Badger High School as long as weather conditions allow.

1. Grace Welhouse (12) Alex Madjun (9) Appleton North (10-1)

2. BYE

3. Janelle Novotny (11) Mallory Kerhin (11) Green Bay Southwest (9-1)

4. Karyssa Norland (11) Addison Kooyman (11) Janesville Craig (6-2)

5. **Sophia Knigge (12) Abby Lin (11) Madison West (4-2)**

6. * Kate Walsh (10) Marissa Light (9) Monona Grove (5-1)

7. **Jessica Jiang (12) Sophia Jiang (9) Madison Memorial (4-1)**

8. Mia Bahr (10) Madeline Kleinke (12) Fond du Lac (7-5)

9. **Tristyn Lueck (12) Audrey Ochsner (12) De Pere (12-2)**

10. BYE

11. * Chloe Beckermann (11) Kimberly Harvey (10) Eau Claire Memorial (14-5)

12. * Sam Lightner (11) Kate Conger (9) Oshkosh West (15-1)

13. **Liz Risgaard (10) Annalise Zenzick (9) Neenah (8-0)**

14. Delaney Christensen (11) Courtney Behnke (11) Ashwaubenon (8-7)

15. Sylvia Fox (10) Ashley Ulset (10) Edgerton (6-2)

16. * Emily Fisher (11) Estelle Leonhard (11) Sheboygan North (3-4)

17. Rose Ryan (11) Cece Hujanen (12) Middleton (7-0)

18. Julia Tackmier (10) Allison Roever (10) Green Bay Southwest (7-3)

19. Lydia Quade (12) Annie Barnes (11) Janesville Parker (10-1)

20. **Katie Rentzepis (11) Lexi Bubzinski (12) Eau Claire Memorial (15-4)**

21. * Susanne Oriel (12) Trya Gustavson (9) Madison West (4-2)

22. * Jordan Streiff (12) Stephanie Lo (10) Oregon (4-2)

23. BYE

24. **Karsen Dettman (12) Noor Rajpal (12) Middleton (5-0)**

25. Morgan Kreuser (11) Julia Huseith (10) Verona Area (10-8)

26. Brinley Bettcher (12) Courtney Carpenter (11) Oshkosh West (12-6)

27. Emma Yeakley (11) Ella Wirtz (11) Oregon (8-0)

28. **Elsie Steimle (12) Kendra Peterson (12) Manitowoc Lincoln (13-2)**

29. * Abby Erwin (10) Tatum Thielman (10) Stevens Point (7-6)

30. * Maeryn Shepherd (12) Anna Harmann (11) De Pere (8-6)

31. BYE

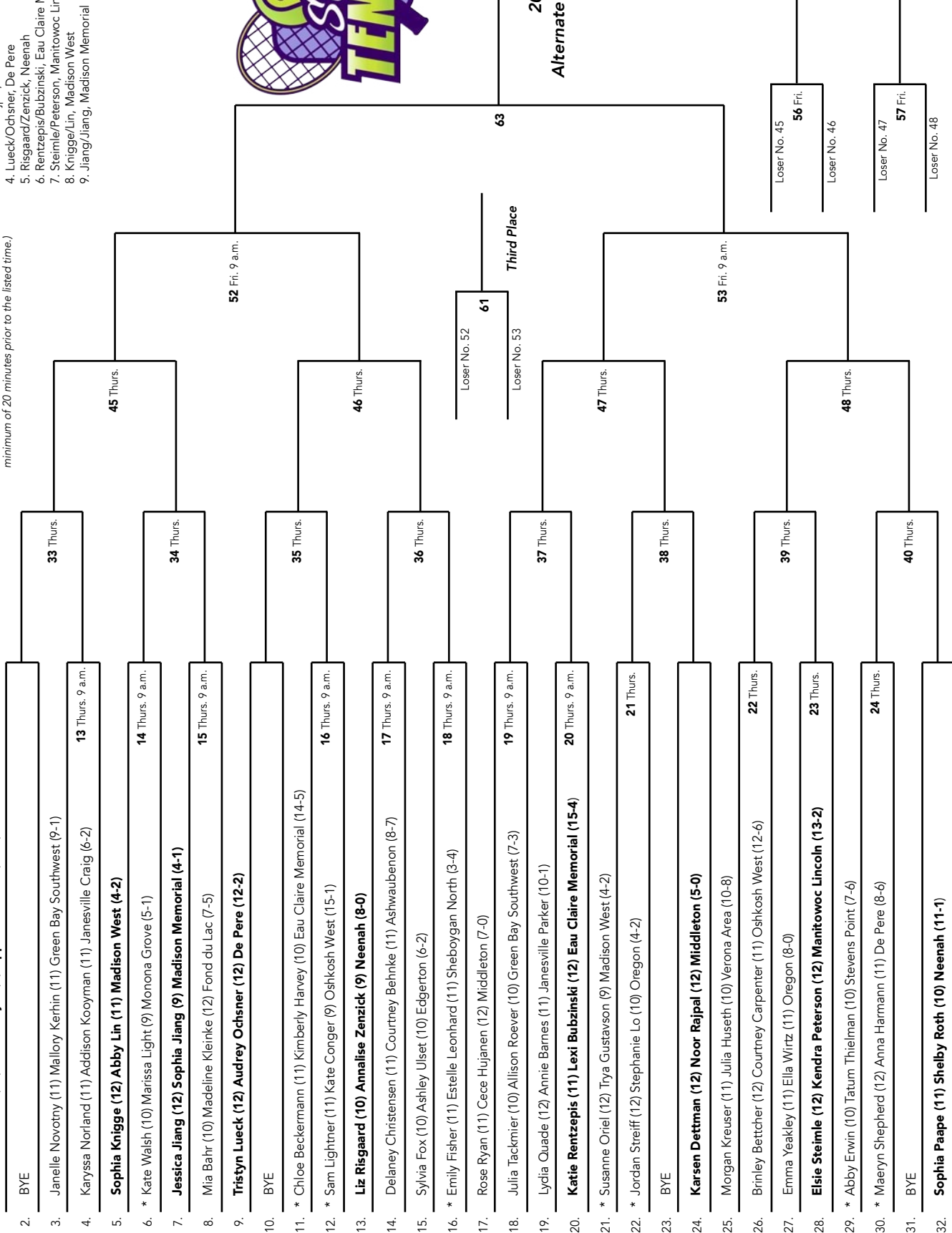
32. **Sophia Paape (11) Shelby Roth (10) Neenah (11-1)**

SEEDED PLAYERS

1. Welhouse/Madjun, Appleton North
2. Paape/Roth, Neenah
3. Dettman/Rajpal, Middleton
4. Lueck/Ochsner, De Pere
5. Risgaard/Zenzick, Neenah
6. Rentzepis/Bubzinski, Eau Claire Memorial
7. Steimle/Peterson, Manitowoc Lincoln
8. Knigge/Lin, Madison West
9. Jiang/Jiang, Madison Memorial

(Match times are approximate – players should report a minimum of 20 minutes prior to the listed time.)

* Special Qualifiers





Team Tournament Participants

Altoona (5) – 2001-2 (0-1), 2007-2 (0-1), 2008-2 (0-1), 2009-2 (0-1), 2015-2 (1-1)
Amery (3) – 2017-2 (0-1), 2018-2 (0-1), 2020-2 (0-1)
Aquinas (4) – 2000-2 (1-1), 2002-2 (0-1), 2005-2 (0-1), 2006-2 (0-1)
Arrowhead (2) – 2014-1 (3-0), 2015-1 (0-1)
Ashwaubenon (1) – 2019-1 (0-1)
Badger (4) – 2012-1 (0-1), 2014-1 (0-1), 2018-1 (0-1), 2019-1 (1-1)
Baldwin-Woodville (2) – 2014-2 (0-1), 2015-2 (0-1)
Big Foot/Williams Bay (4) – 2005-2 (0-1), 2006-2 (0-1), 2007-2 (1-1), 2008-2 (0-1)
Brookfield Central (13) – 1996-1 (2-1), 1997-1 (0-1), 1998-1 (0-1), 1999-1 (0-1), 2000-1 (1-1), 2001-1 (0-1), 2002-1 (3-0), 2003-1 (3-0), 2004-1 (1-1), 2005-1 (2-1), 2006-1 (3-0), 2007-1 (2-1), 2008-1 (2-1)
Brookfield East (7) – 1994-1 (1-1), 1995-1 (0-1), 2014-1 (0-1), 2015-1 (2-1), 2016-1 (0-1), 2017-1 (1-1), 2019-1 (0-1)
Burlington (1) – 2013-1 (0-1)
Catholic Memorial (3) – 2018-2 (1-1), 2019-2 (2-0), 2020-2 (1-1)
Divine Savior Holy Angels (9) – 2001-1 (3-0), 2004-1 (3-0), 2009-1 (0-1), 2010-1 (1-1), 2011-1 (1-1), 2012-1 (2-1), 2013-1 (1-1), 2018-1 (2-1), 2020-1 (1-1)
Durand (2) – 2000-2 (0-1), 2004-2 (0-1)
Eau Claire Memorial (21) – 1997-1 (1-1), 1998-1 (2-1), 1999-1 (2-1), 2000-1 (1-1), 2001-1 (2-1), 2002-1 (0-1), 2003-1 (0-1), 2004-1 (2-1), 2005-1 (0-1), 2006-1 (1-1), 2007-1 (0-1), 2010-1 (0-1), 2011-1 (1-1), 2012-1 (0-1), 2013-1 (2-1), 2014-1 (0-1), 2015-1 (1-1), 2016-1 (1-1), 2017-1 (0-1), 2018-1 (0-1), 2019-1 (0-1)
Edgewood of the Sacred Heart (12) – 2003-2 (0-1), 2004-2 (1-1), 2009-2 (0-1), 2010-2 (1-1), 2011-2 (0-1), 2012-2 (1-1), 2013-2 (2-0), 2014-2 (1-1), 2015-2 (2-0), 2016-2 (2-0), 2018-2 (0-1), 2020-2 (0-1)
Fond du Lac (1) – 2008-1 (0-1)
Fort Atkinson (1) – 2009-1 (0-1)
Green Bay Southwest (19) – 1994-1 (1-1), 1995-1 (1-1), 1996-1 (0-1), 1997-1 (3-0), 1998-1 (1-1), 1999-1 (1-1), 2000-1 (0-1), 2001-1 (0-1), 2002-1 (1-1), 2003-1 (1-1), 2004-1 (0-1), 2005-1 (0-1), 2006-1 (0-1), 2007-1 (1-1), 2009-1 (0-1), 2010-1 (2-1), 2011-1 (0-1), 2012-1 (1-1), 2013-1 (0-1)
Greendale (7) – 1994-2 (2-0), 1995-2 (0-1), 1996-2 (2-1), 1997-2 (2-0), 1998-2 (0-1), 1999-2 (2-0), 2008-1 (0-1)

Homestead (13) – 1997-1 (0-1), 2002-1 (2-1), 2003-1 (2-1), 2008-1 (3-0), 2009-1 (3-0), 2010-1 (3-0), 2011-1 (3-0), 2012-1 (3-0), 2013-1 (1-1), 2016-1 (3-0), 2017-1 (3-0), 2018-1 (3-0), 2019-1 (3-0)
Hudson (1) – 2020-1 (0-1)
Janesville Parker (1) – 2010-1 (0-1)
Kenosha Bradford (1) – 1994-1 (0-1)
Kenosha St. Joseph Catholic Academy (1) – 2017-2 (1-1)
Kenosha Tremper (8) – 1998-1 (0-1), 1999-1 (0-1), 2001-1 (1-1), 2003-1 (0-1), 2004-1 (0-1), 2005-1 (0-1), 2006-1 (1-1), 2007-1 (0-1)
Kettle Moraine (1) – 1996-1 (0-1)
Kohler (3) – 2015-2 (0-1), 2016-2 (0-1), 2019-2 (1-1)
Lakeland (2) – 1998-2 (0-1), 1999-2 (0-1)
Luther (1) – 2019-2 (0-1)
Madison Edgewood (See Edgewood Sacred Heart)
Madison East (9) – 1995-1 (0-1), 2001-1 (0-1), 2002-1 (0-1), 2004-1 (0-1), 2005-1 (0-1), 2006-1 (0-1), 2007-1, 2008-1 (0-1), 2011-1 (0-1)
Madison Memorial (2) – 2005-1 (1-1), 2018-1 (1-1)
Madison West (13) – 1994-1 (0-1), 1996-1 (1-1), 1997-1 (2-1), 1998-1 (0-1), 1999-1 (1-1), 2000-1 (0-1), 2003-1 (0-1), 2004-1 (0-1), 2008-1 (1-1), 2009-1 (1-1), 2016-1 (0-1), 2017-1 (1-1), 2019-1 (1-1)
Manitowoc Lincoln (1) – 2015-1 (0-1)
Marshfield (5) – 1994-1 (2-1), 1995-1 (2-1), 1996-1 (0-1), 2008-1 (1-1), 2009-1 (0-1)
Middleton (7) – 2006-1 (0-1), 2007-1 (0-1), 2010-1 (1-1), 2011-1 (0-1), 2012-1 (0-1), 2013-1 (3-0), 2014-1 (1-1)
Monona Grove (2) – 2001-2 (1-1), 2003-1 (0-1)
Monroe (6) – 1994-2 (0-1), 1995-2 (1-1), 1996-2 (0-1), 1997-2 (0-1), 1998-2 (1-1), 1999-2 (0-1)
Muskego (1) – 2019-1 (2-1), 2020-1 (2-0)
Neenah (17) – 1995-1 (0-1), 1996-1 (1-1), 1997-1 (1-1), 1998-1 (1-1), 1999-1 (0-1), 2000-1 (2-1), 2005-1 (1-1), 2006-1 (0-1), 2007-1 (1-1), 2012-1 (0-1), 2013-1 (0-1), 2014-1 (2-1), 2015-1 (3-0), 2016-1 (2-1), 2017-1 (2-1), 2018-1 (0-1), 2019-1 (0-1)
New Richmond (3) – 1997-2 (0-1), 2002-2 (0-1), 2003-2 (0-1)
Newman Catholic (1) – 2013-2 (0-1)
Nicolet (14) – 1994-1 (3-0), 1995-1 (3-0), 1996-1 (3-0), 1998-1 (3-0), 1999-1 (3-0), 2000-1 (3-0), 2009-1 (1-1), 2011-1 (2-1), 2012-1 (1-1), 2013-1 (0-1), 2014-1 (1-1), 2015-1 (0-1), 2016-1 (1-1), 2017-1 (0-1)

Notre Dame de la Baie Academy (12) – 2001-2 (0-1), 2002-2 (2-0), 2003-2 (2-0), 2005-2 (1-1), 2007-2 (0-1), 2008-2 (2-0), 2009-2 (2-0), 2010-2 (2-0), 2011-2 (1-1), 2014-1 (0-1), 2017-1 (0-1), 2018-1 (0-1)
Oak Creek (1) – 2000-1 (0-1)
Oconomowoc (3) – 1994-1 (0-1), 1995-1 (0-1), 2020-1 (0-1)
Onalaska (1) – 1995-2 (0-1)
Oshkosh West (3) – 2009-1 (2-1), 2010-1 (0-1), 2011-1 (0-1)
Pacelli (1) – 2016-2 (0-1)
Pulaski (1) – 2016-1 (0-1)
Racine Case (1) – 1997-1 (0-1)
Racine Park (2) – 1995-1 (1-1), 1996-1 (0-1)
Regis (8) – 2010-2 (0-1), 2011-2 (0-1), 2012-2 (0-1), 2013-2 (0-1), 2014-2 (0-1), 2016-2 (1-1), 2017-2 (0-1), 2019-2 (0-1)
River Falls (2) – 1994-2 (0-1), 1996-2 (0-1)
Roncalli (2) – 2006-2 (1-1), 2012-2 (0-1)
Saint Mary Central (2) – 2000-2 (0-1), 2004-2 (0-1)
Sheboygan North (2) – 1994-1 (0-1), 2008-1 (0-1)
Stevens Point (4) – 2001-1 (1-1), 2002-1 (1-1), 2003-1 (1-1), 2004-1 (1-1)
Sun Prairie (3) – 2015-1 (0-1), 2016-1 (0-1), 2017-1 (0-1)
The Prairie School (4) – 2000-2 (2-0), 2001-2 (2-0), 2002-2 (1-1), 2003-2 (1-1)
University School of Milwaukee (13) – 2004-2 (2-0), 2005-2 (2-0), 2006-2 (2-0), 2007-2 (2-0), 2008-2 (1-1), 2009-2 (1-1), 2010-2 (0-1), 2011-2 (2-0), 2012-2 (2-0), 2013-2 (1-1), 2014-2 (2-0), 2017-2 (2-0), 2018-2 (2-0)
Verona (2) – 2000-1 (0-1), 2002-1 (0-1)
Waukesha North (1) – 1997-1 (0-1)
Waukesha West (1) – 1998-1 (0-1)
Waunakee (1) – 2015-1 (1-1)
West Bend East (1) – 1999-1 (0-1)
Whitefish Bay (11) – 1994-2 (1-1), 1995-2 (2-0), 1996-2 (2-0), 1997-2 (1-1), 1998-2 (2-0), 1999-2 (1-1), 2005-1 (3-0), 2006-1 (2-1), 2007-1 (3-0), 2010-1 (0-1), 2018-1 (1-1)
Whitnall (2) – 2001-1 (0-1), 2002-1 (0-1)
Xavier (1) – 2020-2 (2-0)

Note: Four schools qualified in 2020 with COVID-19 accommodations

Divine Savior Holy Angels & Xavier Receives Sportsmanship Award

The WIAA requires good sportsmanship by student-athletes, coaches and spectators at education-based, interscholastic events.

We request your cooperation by supporting the participants and officials in a positive manner. Profane, racial, sexist or ethnic comments, or other intimidating actions directed at officials, student-athletes, coaches or team representatives will not be tolerated and are grounds for removal from the site of competition.

Each year the WIAA and Rural Insurance Companies join in honoring one team in the State Girls Team Tennis Tournament as the State Tournament Sportsmanship Award winner. Divine Savior Holy Angels and Xavier won the award in 2020 for their

outstanding display of sportsmanship by athletes, coaches and fans. Teams in the 2020-21 Alternate Fall State Girls Tennis Tournament will be competing for the Sportsmanship Award to be announced after the conclusion of competition. The state tournament experience is enhanced for all when good sportsmanship is evident. We look forward to our teams and fans exhibiting the best in sportsmanship and enthusiasm during the 2020-21 Alternate Fall State Tournament.



Past Sportsmanship Winners

Year	Winner	Honorable Mention	Year	Winner	Honorable Mention
1995	Marshfield	None	2008	Notre Dame de la Baie Academy	Marshfield, University School of Milwaukee
1996	Monroe	Green Bay Southwest, Marshfield, Neenah, Racine Park, River Falls, Whitefish Bay	2009	Oshkosh West	Altoona, Notre Dame de la Baie Academy
1997	Monroe	New Richmond, Racine Case, Waukesha North	2010	Green Bay Southwest	Notre Dame de la Baie Academy
1998	Eau Claire Memorial	Greendale, Kenosha Tremper, Lakeland, Monroe, Neenah	2011	Eau Claire Memorial	Notre Dame de la Baie Academy, Oshkosh West, Regis
1999	Monroe	Nicolet	2012	Roncalli	Green Bay Southwest
2000	Neenah	Durand	2013	Middleton	Regis
2001	Altoona	Kenosha Tremper, Monona Grove, Stevens Point, The Prairie School	2014	University School of Milwaukee	None
2002	Stevens Point	The Prairie School	2015	Neenah	Altoona, Edgewood of the Sacred Heart, Waunakee
2003	The Prairie School	None	2016	Homestead	Pacelli
2004	Eau Claire Memorial	Green Bay Southwest, Madison Edgewood, Madison West	2017	Amery	None
2005	Madison Memorial	Neenah, Notre Dame de la Baie Academy	2018	Eau Claire Memorial	None
2006	University School of Milwaukee	Neenah	2019	Badger	Kohler
2007	Big Foot/Williams Bay	Neenah	2020	Div. 1 - Divine Savior Holy Angels	None
				Div. 2 - Xavier	None



Participants

QUALIFIERS School (Coach)	Singles	Doubles
Appleton North (Scott Burt)	0	1
Appleton West (Paul Endter)	1	0
Ashwaubenon (Murray Gleffe)	2	1
Bay Port (Lindsay Matuszewski)	1	0
De Pere (David Reinardy)	1	2
Eau Claire Memorial (Jim Litscher)	2	2
Edgerton (Eric Nuenthel)	0	1
Fond du Lac (Joe Sagen)	1	1
Green Bay Southwest (Windsor Tanner)	0	2
Janesville Craig (Pam Clutson)	2	1
Janesville Parker (Steven Mickelson)	0	1
Jefferson (Steve Rogers)	1	0
Madison La Follette (Nan Perschon)	1	0
Madison Memorial (Joseph King)	2	1

QUALIFIERS School (Coach)	Singles	Doubles
Madison West (Ryan Reischel)	1	2
Manitowoc Lincoln (Steph Henschel)	1	1
McFarland (Tod Lacey)	1	0
Middleton (Matt Given)	2	2
Monona Grove (John Willauer)	0	1
Neenah (Kyle Falk)	2	2
Oregon (Joan Mohr)	0	2
Oshkosh West (Andrew Schaller)	1	2
Sheboygan North (Samuel Hopp)	2	1
Stevens Point (Michele O'Donnell)	1	1
Stoughton (Amy Kahl)	1	0
Verona Area (Mark Happel)	1	1
Whitewater (John DenBoer)	1	0

Apparel Store online at madacustom.com!

Mada Custom Apparel
madacustom.com

STORE CLOSING
WEDNESDAY, MAY 5TH

<https://tinyurl.com/4sn9ry>

IT'S YOUR CALL...



BECOME A USTA TENNIS OFFICIAL

- Do you enjoy tennis?
- Do you have sharp vision and the ability to concentrate?
- Do you have good communication and organizational skills?
- Are you interested in giving back to tennis some of what it has given you?
- Have you considered becoming a tennis Official?

If you are interested in becoming a USTA official, Visit: www.midwesttennisofficials.org

Neenah **ROCKETS**



From left to right, front row: Paige Stielow, Elizabeth Risgaard, Bradyn Gentile, Meghan Stielow, Olivia Heroux; second row, Head Coach Kyle Falk, Alise Van Dyke, Shelby Roth, Nora Paape, Kinsey Perry, Annalise Zenzick, Ava Dunsirn, Maddie Daharsh, Sophia Paape, Assistant Coach Jeff Lucas.

2020-21 Results

Overall Record: 15-0

Conference Record: 7-0

Opponent	W/L	Score
Appleton West	W	7-0
Appleton East	W	7-0
Verona Area	W	7-0
Eau Claire Memorial	W	7-0
De Pere	W	7-0
Appleton North	W	6-1
Middleton	W	6-1
Eau Claire Memorial	W	5-2
Ashwaubenon	W	5-2
Stevens Point	W	7-0
Manitowoc Lincoln	W	5-2
Sun Prairie	W	7-0
Fond du Lac	W	7-0
Oshkosh North	W	7-0
Oshkosh West	W	5-2

Tournaments	Place
Neenah Quad	.1st
Eau Claire Memorial Quad	.1st
Neenah Invite	.1st

Singles

Flight	Name	Grade	Conference Record	Overall Record
1	Ava Dunsirn	11	7-0	15-0
2	Nora Paape	9	6-0	11-0
3	Olivia Heroux	12	5-1	8-2
4	Meghan Stielow	11	4-1	9-2

Doubles

Flight	Name	Grade	Conference Record	Overall Record
1	Sophia Paape	11	5-0	11-1
	Shelby Roth	10		
2	Elizabeth Risgaard	10	3-0	8-0
	Annalise Zenzick	9		
3	Bradyn Gentile	12	3-0	9-1
	Alise Van Dyke	12		

School Facts

District Administrator: Dr. Mary Pfeiffer

Principal: Brian Wunderlich

Athletic Director: Mike Elkin

Assistant Coach(es): Jeff Lucas & Jeff Lundeen

School Colors: Rocket Red & White

School Enrollment: 2021

Captain(s): Olivia Heroux, Bradyn Gentile & Alise Van Dyke

Athletic Trainer(s): Heidi Neustifter & Quinton Peters

School Twitter: @NeenahSchools

Sport Twitter: @NeenahAD

Head Coach: Kyle Falk

Career Years: 10 yrs

School Record/Years: 30-3/2 yrs

Verona Area WILDCATS



2020-21 Results

Overall Record: 9-6



From left to right, front row: Samantha Breitbach, Elsa Queoff, Annalise Cooper, Emilia Kelley, Christina Bochkova, Morgan Witkowski, Julia Huseth; second row, Erin Nick, Annie Nick, Andrea Chavez-Lazaro, Zoe Qureshi, Karina Meyers, Allison Kohlstedt; third row, Addie Blomberg, Kayde Sheaffer, Morgan Kreuser, Kally Sweet, Virginia O'Brien, Ellery Knight, Hannah Bly; fourth row, Coach Nancy Platto, Hannah Bertrand, Sophia Mansoor, Coach Mark Happel.

Opponent	W/L	Score
Jefferson	W	6-1
La Crosse Logan	W	7-0
La Crosse Central	W	5-2
Neenah	L	0-7
De Pere	L	2-5
Eau Claire Memorial	L	1-6
Middleton	L	3-4
Stoughton	W	6-1
Sun Prairie	W	6-1
La Crosse Central	W	5-2
Monroe	W	7-0
McFarland	W	5-2
Oshkosh West	L	0-7
Janesville Craig	L	3-4
Oregon	W	5-2

School Facts

District Administrator: Dean Gorrell
Principal: Pam Hammen
Athletic Director: Joel Zimba
Assistant Coach(es): Nancy Platto
School Colors: Orange, Black & White
School Enrollment: 1668
Captain(s): Samantha Breitbach,
 Morgan Kreuser & Elsa Queoff
Athletic Trainer: Dren Gashi
School Twitter: @VAHSathletics

Singles

Flight	Name	Grade	Overall Record
1	Samantha Breitbach	11	5-10
2	Elsa Queoff	11	12-6
3	Zoe Qureshi	10	15-3
4	Hannah Bertrand	12	15-1

Doubles

Flight	Name	Grade	Overall Record
1	Morgan Kreuser Julia Huseth	11 10	10-7
2	Andrea Chavez-Lazaro Morgan Witkowski	10 10	3-6
3	Erin Nick Annie Nick	10 9	8-4

Head Coach: Mark Happel (UW-La Crosse, 1992)
 Career Record/Years: 214-111/17 yrs
 School Record/Years: 214-111/17 yrs

Middleton CARDINALS



2020-21 Results

Overall Record: 7-2

Opponent	W/L	Score
Janesville Craig	W	7-0
Janesville Parker	W	7-0
Verona Area	W	4-3
Eau Claire Memorial	L	3-4
Ashwaubenon	W	4-3
Neenah	L	1-6
Janesville Craig	W	7-0
Sun Prairie	W	7-0
Janesville Parker	W	7-0

School Facts

District Administrator: Dana Monogue

Principal: Peg Shoemaker

Athletic Director: Jamie Sims

Assistant Coach(es): Kyle Woghan,
Jenna Degner, Matt Lane & Rich Yoshida

School Colors: Cardinal Red & White

School Enrollment: 2351

Captain(s): Karsen Dettman, Noor Rajpal,
Cece Hujanen & Charlotte Sax



From left to right, front row: Netra Somasundarem, Rose Ryan, Bella Conrad, Noor Rajpal, Ashley Adler, Grace Olson; second row, Assistant Coach Kyle Woghan, Amy Li, Sophia Agapov, Karsen Dettman, Cece Hujanen, Charlotte Sax, Cate Ohly, Caroline Sax, Head Coach Matt Given.

Singles

Flight	Name	Grade	Overall Record
1	Netra Somasundarem	9	10-2
2	Sophia Agapov	10	7-0
3	Amy Li	10	6-4
4	Bella Conrad	11	7-2

Doubles

Flight	Name	Grade	Overall Record
1	Noor Rajpal	12	7-0
	Karsen Dettman	12	
2	Cece Hujanen	12	7-0
	Rose Ryan	11	
3	Charlotte Sax	12	6-0
	Caroline Sax	9	

Head Coach: Matt Given (Arizona State University, 2008)
School Record/Year: 7-2/1 yr

Ashwaubenon JAGUARS



From left to right, front row: Ritha Sunderapandyan, Arya Shankar, Saanvi Kunala, Puja Patel, Courtney Behnke, Jordan Domnick, Supriya Dhruvaraj; second row, Head Coach Murray Gleffe, Aneesha Prathigudupu, Asra Azad, Rachel Alcantar, Delaney Christensen, Karleigh Conradt, Emily Cole, Madyson Rothe, Assistant Coach Raelynn Wingert; third row, Lauryn Wery, Natasha Schiegg, Sarah Beaudou, Nadia Schiegg, Mayghan Bongle, Lucy Cole.

2020-21 Results

Overall Record: 8-3

Conference Record: 8-0

Opponent	W/L	Score
Pulaski	W	5-1
Bay Port	W	6-0
Green Bay Southwest	W	5-2
Eau Claire Memorial	L	1-6
Middleton	L	3-4
Neenah	L	2-5
Sheboygan South	W	7-0
Green Bay Preble	W	7-0
Manitowoc Lincoln	W	4-3
Sheboygan North	W	6-1
De Pere	W	5-2

School Facts

District Administrator: Kurt Weyers

Principal: Dirk Ribbens

Athletic Director: Nick Senger

Assistant Coach(es): Raelynn Wingert & Ray Domnick

School Colors: Green & Yellow

School Enrollment: 975

Captain(s): Natasha Schiegg, Delaney Christensen & Courtney Behnke

Statistician(s): Amy Domnick & Margie Hoslet

Athletic Trainer: Aaron Pelle, Prevea Health

School Twitter: @AshwaubenonJags

Sport Twitter: @jaggirlstennis

Singles

Flight	Name	Grade	Conference Record	Overall Record
1	Natasha Schiegg	11	4-2	9-5
2	Puja Patel	11	5-2	10-5
3	Aneesha Prathigudupu	11	7-0	12-2
4	Jordan Domnick	9	6-1	12-2

Doubles

Flight	Name	Grade	Conference Record	Overall Record
1	Delaney Christensen	11	6-2	8-7
	Courtney Behnke	11		
2	Karleigh Conradt	10	7-0	9-1
	Mayghan Bongle	10		
3	Lucy Cole	10	1-1	2-4
	Emily Cole	12		

Head Coach: Murray Gleffe (UW-La Crosse, 1999)
 Career Record/Years: 323-163/20 yrs
 School Record/Years: 129-51/7 yrs



2020 WIAA Scholar Athlete Award Recipients

The WIAA salutes the 32 winners of the 2020 Scholar Athlete Award. These young men and women are chosen for this prestigious honor on the basis of academic excellence, athletic participation, co-curricular activities, essay responses, civic and community involvement.



Zachary DeGroot
Aquinas



Kayla Bahr
Aquinas



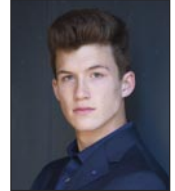
Linzy Sendelbach
Arcadia



Matthew Marcinske
Birchwood



Lauren Steien
Blair-Taylor



Luke Fox
Catholic Memorial



Maya Novack
Cedarburg



Kameri Meredith
Colfax



Jadin O'Brien
Divine Savior Holy Angels



Tommy Larson
East Troy



Marissa Ellenbecker
Edgar



Devon Jay Davey
Elkhorn Area



Charlie Stuhl
Ellsworth



Logan Lillehaug
Frederic



Alec Martzahl
Kimberly



Zach Slevin
La Crosse Logan



Caden Chier
Lourdes Academy



Katelyn Kitzinger
Marinette



Aubrey Schoeneman
Mercer



Isaac Lindsey
Mineral Point



Brittany Helm
Muskego



Lauren Shields
Newman Catholic



Alex Vance
Oconomowoc



Izzy Carroll
Platteville



Skylar White
River Ridge



Max Schwabe
Stratford



Kortnie Volk
Three Lakes



Charles Motiff
Washburn



Anne Dotzler
Waunakee

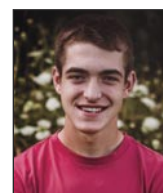


Marc Sippel
Wausau West

The WIAA Scholar/Athlete Award program is made possible by a grant from the Marshfield Clinic.



Don't just live. Shine.



Jacob Reichmann
Wauzeka-Steuben



Laura Beghin
Wisconsin Dells



State Champions

Year	Schools	Champion (Coach)	Runner-up (Coach)	Singles Champion	Doubles Champion
1971	59	Whitefish Bay 21 (Janet Starks)	Nicolet (Helen Warren) & Wauwatosa West 15 (Carol Millen)	Debbie Arps, Wauwatosa West	Kris Bachman/Karin Bachman, Whitefish Bay
1972	82	Wauwatosa West 20 (Carol Millen)	Nicolet 17 (Helen Warren)	Debbie Arps, Wauwatosa West	Kathy Ptacek/Jane Weinfurter, Wauwatosa East
1973	86	Wauwatosa West 22 (Susan Dryburgh)	Nicolet 20 (Sandi Gleisner)	Karen Weis, Wauwatosa West	Amy Bachman/Karin Bachman, Whitefish Bay
1974	108	Whitefish Bay 18 (Jackie Seidler)	Nicolet (Sandi Gleisner) & Wauwatosa West (Susan Dryburgh)	Karen Weis, Wauwatosa West	Amy Bruecker/Colleen Wilson, Whitefish Bay
1975	125	Nicolet 28 (Sandi Gleisner)	Whitefish Bay 22 (Jackie Seidler)	Laura Gordon, Brookfield Central	Leanne Groban/Sherri Morris, Nicolet
1976	148	Nicolet 46 1/2 (Cary Bachman)	Whitefish Bay 43 (Jackie Seidler)	Amy Bachman, Whitefish Bay	Leanne Groban/Sherri Morris, Nicolet
1977	152	Nicolet 39 (Cary Bachman)	Whitefish Bay 29 1/2 (Jackie Seidler)	Chris Breed, Brookfield Central	Linda Gorens/Nancy Zetley, Nicolet
1978	159	Nicolet 34 1/2 (Cary Bachman)	Whitefish Bay 31 (Jackie Seidler)	Nancy Zetley, Nicolet	Sue Strnad/Judy Becker, Nicolet
1979	160	Whitefish Bay 35 (Jackie Seidler)	Nicolet 23 (Cary Bachman)	Ellie Freeman, Whitefish Bay	Marilyn Soergel/Laura Villar, Brookfield Central
1980	163	Nicolet 32 (Cary Bachman)	Brookfield East 20 (Burt Wethe)	Betsy Buetow, Shorewood	Jane Killian/Wren Killian, Nicolet
1981	160	Nicolet 22 (Cary Bachman)	Shorewood 18 (Cheri Strother)	Kris Yahr, Janesville Parker	Linda Waterhouse/Amy Van Ess, Madison Mem.
1982	160	Nicolet 23 (Cary Bachman)	Whitefish Bay 20 (Jackie Seidler)	Patty Crowley, Whitefish Bay	Jill Karofsky/Kristin Moe, Middleton
1983	160	Brookfield Central 32 (Dave Steinbach)	Neenah 24 (Jane Tomow)	Tami Whitlinger, Neenah	Teri Whitlinger/Becky Widener, Neenah
1984	155	Brookfield Central 31 1/2 (Dave Steinbach)	Nicolet 26 1/2 (Cary Bachman)	Tami Whitlinger, Neenah	Teri Whitlinger/Kris Whitney, Neenah
1985	154	Brookfield Central 36 (Dave Steinbach)	Nicolet 25 (Cary Bachman)	Tami Whitlinger, Neenah	Teri Whitlinger/Kris Whitney, Neenah
1986	158	Brookfield Central 28 (Dave Steinbach)	Neenah 26 (Ben DeDecker)	Tami Whitlinger, Neenah	Teri Whitlinger/Cathy Farrell, Neenah
1987	158	Brookfield Central (Dave Steinbach) & Madison Memorial 30 (Jim Roth)		Kathy Dortzbach, Madison Memorial	Heidi Jurczyk/Stephanie Jurczyk, Brookfield Cent.
1988	158	Madison Memorial 30 1/2 (Chris Grainger)	Brookfield Central 28 (Dave Steinbach)	Kathy Dortzbach, Madison Memorial	Colette Gundersen/Carrie Garlough, Madison Mem.
1989	157	Nicolet 20 1/2 (Cary Bachman)	Wauwatosa East 16 (Virginia Schneider)	Stephany Benz, Sun Prairie	Angie Robarge/Katie Harrell, La Crosse Central
1990	157	Nicolet 22 (Cary Bachman)	Brookfield Central 18 (Dave Steinbach)	Colleen Lucey, West Allis Hale	Susan Hoffman/Erin Grambow, Whitefish Bay
1991	156	Brookfield Central 24 (Dave Steinbach)	Brookfield East 20 (Burt Wethe)	Amanda Shinall, Madison Memorial	Erika Wentz/Jenny Cheung, Brookfield Central
1992	159	Nicolet 23 1/2 (J. Cary Bachman)	Madison Memorial 20 (Chris Grainger)	Amanda Shinall, Madison Memorial	Erin Grambow/Katy Hoffman, Whitefish Bay
1993	161	Nicolet 25 (J. Cary Bachman)	Brookfield Central 20 (Dave Steinbach)	Jennifer Hayes, Fond du Lac	Kristin Dodds/Colleen Algrin, Greendale
1994#	162	1 - Nicolet 5 (J. Cary Bachman) 2 - Greendale 4 (Dale Kreske)	Marshfield 2 (Garry Koehler) Whitefish Bay 3 (Kevin Laing)	Jana Hrdinova, Stoughton Kate Hoffman, Whitefish Bay	Jenny Ferguson/Jane Rosecky, Brookfield East Colleen Algrin/Susan Algrin, Greendale
1995	163	1 - Nicolet 7 (J. Cary Bachman) 2 - Whitefish Bay 7 (Glorianne Mather)	Marshfield 0 (Garry Koehler) Monroe 0 (Jim Bartholf)	Lia Jackson, Nicolet Andrea Nilsen, Union Grove	Molly Opel/Dee Yunk, Sheboygan North Susan Algrin/Stacey Krueger, Greendale
1996	165	1 - Nicolet 4 (J. Cary Bachman) 2 - Whitefish Bay 5 (Glorianne Mather)	Brookfield Central 3 (Dave Steinbach) Greendale 2 (Dale Kreske)	Lia Jackson, Nicolet Lianna Dorn, Greendale	Katie Reber/Erin Parks, South Milwaukee Susan Algrin/Krysten Leary, Greendale
1997	165	1 - Green Bay Southwest 4 (Randy Nelson) 2 - Greendale 4 (Dale Kreske)	Madison West 3 (Kathy Koritzinsky) Whitefish Bay 3 (Glorianne Mather)	Lia Jackson, Nicolet Christina Laun, Kiel	Annie Nelson/Emily Appen, Madison Memorial Stephanie Witczak/Briana Dooley, Greendale
1998	168	1 - Nicolet 4 (Tim Koppa) 2 - Whitefish Bay 6 (Glorianne Mather)	Eau Claire Memorial 3 (Jim Litscher) Monroe 1 (Jim Bartholf)	Kim Plaushines, Kettle Moraine Lianna Dorn, Greendale	Emily Appen/Annie Nelson, Madison Memorial Katie Mulcahy/Laura Saberson, Whitefish Bay
1999	169	1 - Nicolet 4 (Tim Koppa) 2 - Greendale 4 (Dale Kreske)	Eau Claire Memorial 3 (Jim Litscher) Whitefish Bay 3 (Glorianne Mather)	Caitlin Burke, Cedarburg Kaylan Caiati, Greendale	Lindsey Brock/Stacy Brock, Homestead Kristine Meulendyke/Julia Mohr, Whitefish Bay
2000	197	1 - Nicolet 4 (Tim Koppa) 2 - The Prairie School 7 (Nich Schafer)	Neenah 3 (Amy Buege) Aquinas [La Crosse] 0 (Frank Menascino)	Caitlin Burke, Cedarburg Kaylan Caiati, Greendale	Sara Casperson/Kristen Mader, Neenah Kara Metzger/Andrea Bukacek, The Prairie School
2001	199	1 - Divine Savior Holy Angels 5 (Nancy Massart) 2 - The Prairie School 7 (Nich Schafer)	Eau Claire Memorial 2 (Jim Litscher) Monona Grove 0 (Tim Sharpe)	Caitlin Burke, Cedarburg Kaylan Caiati, Greendale	Elissa Bashleben/Chelsey Casperson, Neenah Kara Metzger/Andrea Bukacek, The Prairie School
2002	199	1 - Brookfield Central 4 (Dave Steinbach) 2 - Notre Dame 4 (Katie Daker)	Homestead 3 (Jackie Mueller) The Prairie School 3 (Nich Schafer)	Caitlin Burke, Cedarburg Kaylan Caiati, Greendale	Chelsey Casperson/Molly Casperson, Neenah Kara Metzger/Andrea Bukacek, The Prairie School
2003	203	1 - Brookfield Central 4 (Dave Steinbach) 2 - Notre Dame 5 (Katie Deprey)	Homestead 3 (Jackie Mueller-Egelhoff) The Prairie School 2 (Nich Schafer)	Katie Potts, Divine Savior Holy Angels Tess Reddin, Saint Mary Central	Nikki Hein/Alex Bear, Nicolet Jenny Spears/Amy Lewis, Notre Dame
2004	203	1 - Divine Savior Holy Angels 6 (Nancy Massart) 2 - University Sch. of Milw. 7 (Michael Davidson)	Eau Claire Memorial 1 (Jim Litscher) Madison Edgewood 0 (Karl Stubben)	Katie Potts, Divine Savior Holy Angels Tess Reddin, Saint Mary Central	Haley Bortz/Amanda Gryniwicz, Divine Savior Holy Angels Emily Lewis/Mellissa Lewis, Big Foot/Will. Bay
2005	207	1 - Whitefish Bay 5 (Phil Kelbe) 2 - University Sch. of Milw. 5 (Michael Davidson)	Brookfield Central 2 (Dave Steinbach) Notre Dame 2 (Shane Lagerman)	Dana Larsen, Whitefish Bay Tess Reddin, Saint Mary Central	Amanda Gryniwicz/Haley Bortz, Divine Savior Holy Angels Sarah Leonard/Sarah Tweddell, Shorewood
2006	207	1 - Brookfield Central 4 (Dave Steinbach) 2 - University Sch. of Milw. 7 (Michael Davidson)	Whitefish Bay 3 (Phil Kelbe) Roncalli 0 (Mike Halla)	Lauren Gruber, Whitefish Bay Caroline Starck, Big Foot/Williams Bay	Emily Lawent/Dana Larsen, Whitefish Bay Lindsey Balzan/Chelsea Stangel, Roncalli
2007	208	1 - Whitefish Bay 6 (Phil Kelbe) 2 - University Sch. of Milw. 5 (Renee Rousseau-Weber & Harazet Jimenez)	Brookfield Central 1 (Dave Steinbach) Big Foot/Williams Bay 2 (Jim Karedes)	Tessa Lang, Chippewa Falls Caroline Starck, Big Foot/Williams Bay	Rebecca Nelson/Kayley Carswell, Brookfield Cent. Sarah Vandenberg/Saira Khanna, Univ. Sch. of Milw.
2008	209	1 - Homestead 5 (Jackie Mueller-Egelhoff) 2 - Notre Dame 5 (Shane Lagerman)	Brookfield Central 2 (Dave Steinbach) University Sch. of Milw. 2 (Harazet Jimenez)	Aly Coran, Homestead Caroline Starck, Big Foot/Williams Bay	Lauren Gryniwicz/Scarlett Hoy, Divine Savior Holy Angels Elissa Halla/Natalie Foster, Roncalli
2009	206	1 - Homestead 6 (Jackie Mueller-Egelhoff) 2 - Notre Dame 5 (Shane Lagerman)	Oshkosh West 1 (Debbie Heinen) University Sch. of Milw. 2 (Julia Goldberg)	Aly Coran, Homestead Shannon Etten, Xavier	Tara Robey/Sarah Woods, Divine Savior Holy Angels Elissa Halla/Natalie Foster, Roncalli

Continued on Page 18

State Champions – Continued from Page 17

Year	Schools	Champion (Coach)	Runner-up (Coach)	Singles Champion	Doubles Champion
2010	207	1 – Homestead 7 (Jackie Mueller-Egelhoff)	Green Bay Southwest 0 (Randy Nelson)	Karyn Guttormsen, Kenosha Bradford	Tara Robey/Sarah Woods, Divine Savior Holy Angels
		2 – Notre Dame 7 (Shane Lagerman)	Madison Edgewood 0 (Toby Kinsler)	Maddy Ecker, Univ. Sch. of Milw.	Katie Pott/Christina Schaupp, Notre Dame
2011	207	1 – Homestead 5 (Jackie Mueller-Egelhoff)	Nicolet 2 (Tim Koppa)	Elizabeth Konon, Homestead	Carly Peck/Sophia Lococo, Homestead
		2 – University School of Milw. 4 (Andy Paley)	Notre Dame 3 (Shane Lagerman)	Ellie Zimmermann, Notre Dame	Riley Kelly/Rebecca Buchanan, Univ. School of Milw.
2012	208	1 – Homestead 4 (Jackie Mueller-Egelhoff)	Divine Savior Holy Angels 3 (Greg Cromwell)	Elizabeth Konon, Homestead	Sophia Lococo/Anna Kreynin, Homestead
		2 – University School of Milw. 4 (Andy Paley)	Edgewood of the Sacred Heart 3 (Kelly Lagman)	Ali Pollack, Univ. Sch. of Milw.	Lauren Keller/Morgan Molitor, Edgewood of the Sacred Heart
2013	207	1 – Middleton 5 (Deke Bradley)	Eau Claire Memorial 2 (Jim Litscher)	Lexi Keberle, West Bend East	Shelby Chorney/Tilly Chorney, Waunakee
		2 – Edgewood of the Sacred Heart 4 (Kelly Lagman)	University Sch. of Milw. 3 (Andy Paley)	Grace Larrain, Newman Catholic	Julia Veitinger/Taylor Benard, Univ. School of Milw.
2014	207	1 – Arowhead 5 (Gina Resch)	Neenah 2 (Kelly Van Handel)	Lexi Keberle, West Bend East	Katya Mikhailenko/Anna Kreynin, Homestead
		2 – University Sch. of Milw. 4 (Andy Paley)	Edgewood of the Sacred Heart 3 (Kelly Lagman)	Claire Czerwonka, Kenosha St. Joseph Catholic Academy	Annie McGrail/Meredith Heckert, Big Foot/Williams Bay
2015	206	1 – Neenah 4 (Kelly Van Handel)	Brookfield East 3 (Linda Lied)	Emily Luetschwager, Stevens Point	Abbey Webber/Kaisey Skibba, Middleton
		2 – Edgewood of the Sacred Heart 7 (Tod Lacey)	Altoona 0 (Greg Emerson)	Claire Czerwonka, Kenosha St. Joseph Catholic Academy	Riley Strauss/Caroline Taylor, Univ. School of Milw.
2016	203	1 – Homestead 4 (Jackie Mueller-Engelhoff)	Neenah 3 (Kelly Van Handel)	Emily Luetschwager, Stevens Point	Christine Price/Kiki Risgaard, Neenah
		2 – Edgewood of the Sacred Heart 7 (Jamey Vorlander)	Regis 0 (Kyle Seyer)	Claire Czerwonka, Kenosha St. Joseph Catholic Academy	Abby Fox/Maddie Molitor, Edgewood of the Sacred Heart
2017	203	1 – Homestead 5 (Jackie Mueller-Engelhoff)	Neenah 2 (Kelly Kanowitz)	Kiki Risgaard, Neenah	Amanda Newman/Hailey Munz, Monona Grove
		2 – University School of Milwaukee 6 (Matt Flack)	Kenosha St. Joseph Catholic Academy 1 (Nony Schwartz)	Veda Sane, University School of Milwaukee	Kaitlyn Kalinka/Megan Setter, Kenosha St. Joseph Catholic Academy
2018	200	1 – Homestead 4 (Jackie Mueller-Engelhoff)	Divine Savior Holy Angels 3 (Melissa Gebhardt)	Bojana Pozder, Racine Case	Annabelle Crowley/Emma Koppa, Nicolet
		2 – University School of Milwaukee 5 (Matt Flack)	Catholic Memorial 2 (Carl Veenendaal)	Mia Larrain, Newman Catholic	Giana Apolstoli/Megan Setter, Kenosha St. Joseph Catholic Academy
2019	201	1 – Homestead 4 (Jackie Engelhoff)	Muskego 3 (Sue Vogel)	Jordan Schifano, Divine Savior Holy Angels	Cecile Fuchs/Samantha Fuchs, DeForest
		2 – Catholic Memorial 5 (Jeff Mrochinski)	Kohler 2 (Brad Hoffmann)	Baluck Deang, Edgewood Sacred Heart	Erika Curtin/Ellie Macksood, Xavier
2020 [^]	149	1 – Muskego 4 (Blake Kraussel)	Divine Savior Holy Angels 3 (Melissa Gebhardt)	Elizabeth Sobieski, Muskego	Halle Rosentretter/Gwen Hammond, Wilmot Union
		2 – Xavier 5 (Rick Jandl)	Catholic Memorial 2 (Jeff Mrochinski)	Baluck Deang, Edgewood Sacred Heart	Kala Siddalingaiah/Rebecca Daskal, Univ. School of Milw.

#Beginning in 1994, team champions were determined in separate dual meet competition.

[^]Four teams qualified for Divisions 1 and 2 with COVID-19 accommodations.



Award of Excellence

RECIPIENTS

2019-20



Appleton North
Baldwin-Woodville
Baraboo
Brookwood
Clintonville
Crivitz
Divine Savior Holy Angels
Fort Atkinson
Franklin
Hilbert
Hortonville
Johnson Creek
Kenosha Christian Life
Kenosha St. Joseph Catholic
Kenosha Tremper
Kimberly
Lake Mills

Luther
Marshfield
Mayville
Merrill
Monroe
New Berlin Eisenhower
New Berlin West
Northland Pines
Oak Creek
Onalaska
Oregon
Pewaukee

Pius XI Catholic
Racine Horlick
Racine Lutheran
Racine St. Catherine's
Saint Croix Central
Sauk Prairie
Sheboygan Falls
Stoughton
The Prairie School
University School of Milwaukee
Watertown
Waukesha West
Wausau West
West Bend East
Winter
Wisconsin Dells
Wisconsin Lutheran

• *Leadership* • *Sportsmanship* • *Ethics* • *Integrity* •



2020 State Results

State Individual Championships – October 15-17, 2020 Div. 1 Lake Geneva Tennis Club & Div. 2 Sports Core, Kohler

Division 1 - Singles

Championship

Elizabeth Sobieski, Muskego def. Autumn Bruno, Whitnall 3-6, 6-3, 6-2

Semifinal

Elizabeth Sobieski, Muskego def. Natasha Bailey, Wausau West 6-2, 6-1; Autumn Bruno, Whitnall def. Zaya Iderzul, Badger 6-4, 4-6, 6-3

Third Place

Zaya Iderzul, Badger def. Natasha Bailey, Wausau West 7-6(5), 6-1

Fifth Place

Carolyn Schaefer, Divine Savior Holy Angels def. Christina Pan, Muskego 6-7(2), 6-3, 6-4

Division 1 - Doubles

Championship

Halle Rosentreter/Gwen Hammond, Wilmot Union def. Hannah Cady/Ann Long, Arrowhead 7-5, 6-1

Semifinal

Halle Rosentreter/Gwen Hammond, Wilmot Union def. Sophia Dekker/Madelyn Dziubek, Franklin 6-2, 6-3; Hannah Cady/Ann Long, Arrowhead def. Abby Osterman/Jean Marie Lorentz, Kimberly 6-1, 6-3

Third Place

Sophia Dekker/Madelyn Dziubek, Franklin def. Abby Osterman/Jean Marie Lorentz, Kimberly 6-4, 6-3

Fifth Place

Kate Wade/Ellie Sprinkmann, Homestead def. Aubrey Berther/Sarah Kopfer, Oconomowoc 6-2, 6-4

Division 2 - Singles

Championship

Baluck Deang, Edgewood Sacred Heart def. Erika Curtin, Xavier 6-3, 7-5

Semifinal

Baluck Deang, Edgewood Sacred Heart def. Lauren Carson, Catholic Memorial 6-4, 6-4; Erika Curtin, Xavier def. Emily Gauger, Big Foot/Williams Bay 6-4, 6-7(5), 6-1

Third Place

Emily Gauger, Big Foot/Williams Bay def. Lauren Carson, Catholic Memorial 3-6, 7-5, 2-0 retire

Fifth Place

Lauren Lindow, East Troy def. Kate Smith, Racine Saint Catherine's/Racine Lutheran 6-1, 6-4

Division 2 - Doubles

Championship

Kala Siddalingaiah/Rebecca Daskal, University School of Milwaukee def.

Kylie McCormick/Bella Taleon, Xavier 7-5, 7-5

Semifinal

Kala Siddalingaiah/Rebecca Daskal, University School of Milwaukee def.

Sophia Rondeau/Katie Metcalf, East Troy 6-2, 7-5; Kylie McCormick/Bella Taleon, Xavier def. Cassie Warren/Sarah Hoffe, Luther 6-3, 4-6, 6-2

Third Place

Cassie Warren/Sarah Hoffe, Luther def. Sophia Rondeau/Katie Metcalf, East Troy 6-3, 6-2

Fifth Place

Ava Hoffmann/Lily Montes, Kohler def. Amelia Topolski/Morgan Thill, Aquinas 6-4, 6-0

State Team Championships – October 24, 2020

Div. 1 Lake Geneva Tennis Club & Div. 2 Sports Core, Kohler

(Team match consists of 4 singles matches and 3 doubles matches)

Division 1 Championship

MUSKEGO 4,

DIVINE SAVIOR HOLY ANGELS 3

SINGLES

Elizabeth Sobieski (M) def. Carolyn Schaefer (D) 1-6, 6-3, 6-2

Christina Pan (M) def. Alex Moews (D) 6-1, 6-3

Emily Pan (M) def. Grace Packee (D) 6-1, 6-2

Madelyn Guillermo (D) def. Mia Barrett (M) 6-2, 6-1

DOUBLES

Lauren Sobieski/Megan Lambrecht-Scasny (M) def.

Delanie Dahm/Kate Spielbauer (D) 6-4, 6-0

Emily Martin/Julia Cyganiak (D) def. Olivia Berger/Kayla Gibbs (M) 6-0, 6-1

Molly Jex/Lailah Young (D) def. Maddie Vukovic/Catherine Upthegrove (M) 6-0, 6-3

Division 1 Semifinal

DIVINE SAVIOR HOLY ANGELS 7,

HUDSON 0

SINGLES

Carolyn Schaefer (D) def. Sophia Jonas (H) 6-0, 6-2

Alex Moews (D) def. Lily Holmberg (H) 6-0, 6-1

Grace Packee (D) def. Grace Diedrich (H) 6-2, 6-1

Madelyn Guillermo (D) def. Claire Keech (H) 6-1, 6-1

DOUBLES

Delanie Dahm/Kate Spielbauer (D) def. Livi Boily/

Jordan Yacoub (H) 6-2, 6-1

Emily Martin/Julia Cyganiak (D) def. Kira Young/

Grace Lewis (H) 6-1, 6-0

Molly Jex/Lailah (D) def. Sophie Pope/Bailey Finch (H) 6-4, 6-2

Division 1 Semifinal

MUSKEGO 4, OCONOMOWOC 3

SINGLES

Elizabeth Sobieski (M) def. Zoe Goeldner (O) 6-0, 6-1

Christina Pan (M) def. Juliet Hussey (O) 6-0, 6-0

Emily Pan (M) def. Julia Picco (O) 6-1, 6-0

Mia Barrett (M) def. Hannah Cottick (O) 6-1, 7-6 (5)

DOUBLES

Sarah Kopfer/Aubrey Berther (O) def. Lauren Sobieski/

Megan Lambrecht-Scasny (M) 6-2, 7-6(5)

Molly Schlosser/Megan Griswold (O) def. Olivia

Berger/Kayla Gibbs (M) 6-3, 6-1

Mara Hoffmann/Karina Manders (O) def. Maddie

Vukovic/Catherine Upthegrove (M) 6-1, 6-2

Division 2 Championship

XAVIER 5,

CATHOLIC MEMORIAL 2

SINGLES

Erika Curtin (X) def. Shannon Kutcher (C), 6-0, 6-0

Anne Marie Knabe (X) def. Courtney Sturm (C), 6-2, 7-5

Maggie McGinnis (X) def. Jessica Jacobson (C), 6-4, 6-1

Grace Dorow (C) def. Allyson McGlone (X), 6-3, 1-6, (7)

DOUBLES

Kylie McCormick/Bella Taleon (X) def. Emily Dorow/

Jeslyn Singson (C), 6-2, 6-3

Carly Bomier/Mary Van Stratten (X) def. Alice

McCaffery/Reagan Rebholz (C), 7-6(4), 7-6 (6)

Monika Multhauf/Kallyn Sauer (C) def. Madie Main/

Kelsey Barth (X), 6-1, 6-3

Division 2 Semifinal

CATHOLIC MEMORIAL 5,

EDGEWOOD SACRED HEART 2

SINGLES

Baluck Deang (E) def. Shannon Kutcher (C), 6-0, 6-0

Courtney Sturm (C) def. Morgan Merckx (E), 7-5, 6-2

Jessica Jacobson (C) def. Sarah Dunn (E), 6-0, 6-0

Grace Dorow (C) def. Bronte Jenson (E), 2-6, 6-3, 6-4

DOUBLES

Maeve Shanahan/Samantha Buchner (E) def. Emily

Dorow/Jeslyn Singson (C), 6-2, 6-3

Alice McCaffery/Reagan Rebholz (C) def. Sydney

Johnson/Ella Kory (E), 6-0, 6-2

Monika Multhauf/Kallyn Sauer (C) def. Ella Johnson/

Logan Grabbins (E), 6-3, 6-1

Division 2 Semifinal

XAVIER 7, AMERY* 0

SINGLES

Erika Curtin (X) def. Sophie Whitley (A), 6-0, 6-1

Anne Marie Knabe (X) def. Hannah Bottolfson (A), 6-4,

6-2

Maggie McGinnis (X) def. Lilly Marquand (A), 6-0, 6-0

Allyson McGlone (X) def. Ella Gould (A), 6-1, 6-1

DOUBLES

Kylie McCormick/Bella Taleon (X) def. Deidra Meyer/

Ally de la Cruz (A), 6-0, 6-0

Carly Bomier/Mary Van Stratten (X) def. Truc Nguyen/

Alaina Rivard (A), 6-0, 6-3

Madie Main/Kelsey Barth (X) def. Maya Curtis/Annie

Zinn (A), 6-1, 6-1

* Regis voluntarily withdrew

HALL OF FAME HISTORY

1979 – Ben Peacock, Wauwatosa
1979 – Milton “Ike” Ruehl, Milwaukee Washington
1980 – Ivy Williams, Neenah
1981 – Dick Arnold, Waukesha
1982 – Leo Kenney, Menasha
1988 – Cary Bachman, Nicolet
1989 – Bob Duebler, Manitowoc
1989 – Wes Holman, Kenosha Tremper
1989 – Gordon Kotinek, Beaver Dam
1990 – Donald Kuhnke, Wauwatosa West
1990 – Ken Wasserman, Oconomowoc
1991 – Stan Hillestad, Eau Claire Memorial
1995 – Jeff Krumrich, New Berlin West
1995 – Jackie Siedler, Whitefish Bay
1998 – Chuck Schlitz, Wausau East
1998 – David Stimpson, Whitewater
1999 – Garry Koehler, Marshfield
1999 – Ron Sandven, Sheboygan North

2000 – Jim Laing, University School of Milw.
2001 – Bob Erickson, Sheboygan South
2001 – T.W. Sievert, Oshkosh
2001 – John Stevenson, Manitowoc Lincoln
2001 – Norm (Coach) Tebo, Appleton West
2002 – Bob Renslo, McFarland
2003 – Jerry Brinkman, Plymouth
2003 – Bob Neja, West Bend East
2004 – Burt Wethe, Brookfield East
2005 – Charles Chatman, Kenosha Bradford
2005 – Bob Johnson, South Milwaukee
2007 – Larry E. Johnson, Amery
2007 – Mary Tuchscherer, Wausau East
2008 – Denny Schacter, UW-Madison
2009 – Jim Bartholf, Monroe
2009 – Bill Van Lieshout, Oshkosh North
2011 – Ron Nelson, Elkhorn Area
2012 – Tom Berven, Neenah

2012 – William Zigmund, Green Bay West,
Green Bay Preble & Green Bay Southwest
2012 – Mike Donovan, Marquette
2012 – Harold Swanson, The Prairie School
2013 – James Litscher, Eau Claire Memorial
2013 – Dave Steinbach, Brookfield Central
2014 – Sherry Nutt, Arrowhead & Pulaski
2014 – Trude Mihalovich Pletcher, South Milwaukee
2015 – Jackie Egelhoff, Homestead
2015 – Bob Feller, Manitowoc Lincoln
2015 – Al Carrier, West Bend East
2016 – Ben DeDecker, Neenah
2016 – Barb Mancuso, Wisconsin Rapids Lincoln
2016 – Jim Rumpel, Baldwin-Woodville
2018 – Leigh Cherveney, Sheboygan Falls
2018 – Dave Kalscheur, Beaver Dam
2018 – Bob Nelson, Roncalli
2018 – Jerry Pintar, Pius XI Catholic

COACHING DUAL VICTORIES

Boys 500 Dual Wins

Dave Steinbach, Brookfield Central

Boys 400 Dual Wins

Cary Bachman, Nicolet
Tom Berven, Neenah
Jim Litscher, Eau Claire Memorial
Randy Nelson, Green Bay Southwest/
Green Bay Preble

Boys 300 Dual Wins

Jim Bartholf, Monroe
Al Carrier, West Bend East
Leigh Cherveney, Sheboygan Falls
Mike Donovan, Marquette
Bob Feller, Manitowoc
Bob Heideman, Rhinelander
Jim Laing, University School of Milw.
Jim Matousek, Brown Deer
Bob Nelson, Roncalli
Burt Wethe, Brookfield East

Boys 200 Dual Wins

Jerry Brinkman, Plymouth
Mark Chullino, Edgewood
Ted Dasler, Lakeland
Bob Erickson, Sheboygan South
David R. Frank, Marquette Univ. H.S.
Stan Hillestad, Eau Claire Memorial
Dave Kalscheur, Beaver Dam
Garry Koehler, Marshfield
Tim Koppa, Nicolet
Dale Kreske, Greendale
Tom LaFountain, Chilton
Dave Lindow, East Troy
Nan Perschon, Madison La Follette
Jim Rumpel, Baldwin-Woodville
Glen Slonac, Wauwatosa East
Don Tellefsen, Oak Creek

Boys 100 Dual Wins

Greg Alft, Waukesha South
Dick Amble, Black River Falls
Dieter Antoni, Onalaska
Rob Boden, Milton
Mike Brannen, Union Grove
Pete Christofferson, Verona
James Christophersen, Bay Port

Boys 100 Dual Wins (Continued)

Murray Gieffe, Green Bay East/Ashwaubenon
Rick Gloe, Ashwaubenon
Chris Grainger, Madison Memorial
Jon Hilding, Hudson
Wes Holman, Kenosha Tremper
Greg Isermann, Middleton
Vern Jordan, Fort Atkinson
Jim Karedes, Big Foot/Williams Bay
Paul Kollmorgen, Martin Luther
Shane Lagerman, Notre Dame
Floyd Le Douton, Marinette
Barb Mancuso, Wisconsin Rapids Linc.
Mike Montello, New Richmond
Camilla Owen, Janesville Craig
Bob Renslo, McFarland
Chuck Schlitz, Wausau East
Dave Smith, Marshfield
David Stimpson, Whitewater
Wendy Tauscheck, Kohler
Bill Van Lieshout, Oshkosh North
Carl Veenendaal, Catholic Memorial
Bob Verkins, Appleton East

Girls 600 Dual Wins

Randy Nelson, Green Bay Southwest

Girls 500 Dual Wins

Dave Steinbach, Brookfield Central

Girls 400 Dual Wins

Wendy Hastings, Menomonie
Jim Litscher, Eau Claire Memorial

Girls 300 Dual Wins

Dave Lindow, East Troy
Tim Nelson, Whitewater

Girls 200 Dual Wins

Cary Bachman, Nicolet
Sandy Cherveney, Sheboygan Falls
Dave Dahl, Hudson
Bob Heideman, Rhinelander
Paul Kappelman, Two Rivers
Garry Koehler, Marshfield
Tim Koppa, Nicolet
Kathy Koritzinsky, Madison West
Jim Laing, University School of Milw.
Ron Nelson, Elkhorn Area

Girls 200 Dual Wins (Continued)

Mark Ross, Luther
Jim Rumpel, Baldwin-Woodville
Mary Tuchscherer, Wausau East

Girls 100 Dual Wins

Andrew Andress, Hartford Union
Jim Bartholf, Monroe
Russ Borman, Chippewa Falls
Mike Brannen, Union Grove
Amy Buege, Neenah
Jack Cepek, Wisconsin Rapids
Gail Champion, Franklin
Charles Chatman, Kenosha Bradford
Pete Christofferson, Verona
Mark Chullino, Edgewood
Mike Daniels, Divine Savior Holy Angels
Bill Davis, Marshfield
Rosemary Dolatowski, Burlington
Jackie Egelhoff, Homestead
Greg Emerson, Altoona
Bob Erickson, Sheboygan South
Chris Grainger, Madison Memorial
Mark Happel, Verona Area
Gary Jackson, Madison East
Randy Juley, Newman Catholic
Dave Kalscheur, Beaver Dam
Jim Karedes, Big Foot/Williams Bay
Paul Kollmorgen, Martin Luther
Dale Kreske, Greendale
Teresa Kvam, New Richmond
Shane Lagerman, Notre Dame
Glenn Lehnert, De Pere
Trude Mihalovich, South Milwaukee
Camilla Owen, Janesville Craig
Tom Pacetti, Kenosha Tremper
Nan Perschon, Madison La Follette
Bob Renslo, McFarland
Kevin Roop, Aquinas
Nancy Schmidt, Stevens Point
Ginger Schneider, Wauwatosa East
Kyle Seyer, Regis
Glen Slonac, Wauwatosa East
David Stimpson, Whitewater
Wendy Tauscheck, Kohler
Dan Thies, Milton
Bill Van Lieshout, Oshkosh North
Burt Wethe, Brookfield East

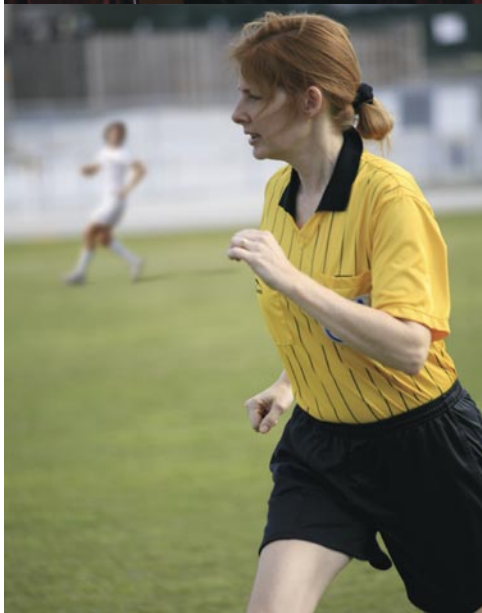
The Wisconsin High School Tennis Coaches Association is an organization geared to benefit the following areas:

1. High School Tennis (girls and boys) – top ten list, rules, All State Team.
2. To educate the coaches on rules, strategy, skills, and mental aspects of tennis – clinic and rules test.
3. To build collegiality among the coaches.
4. To recognize the outstanding job being done currently and in the past by Wisconsin tennis coaches – 100, 200, 300, 400 Victory Certificates; Coaches of the Year; and Hall of Fame awards.



Get Back in the Game!

Earn part-time income.
Your local high schools need
umpires and referees.



Become An Official. Start Today.

For more information contact:
Wisconsin Interscholastic Athletic Association
715-344-8580
www.wiaawi.org

Kids belong out here.



We help keep them here.

At Marshfield Children's, we believe kids belong playing sports, cheering on their favorite teams and having fun with other children. Our network of primary and specialty care helps keep them there.

In communities across Wisconsin, our pediatricians are supported by more than 40 children's specialties - like pediatric orthopedics, behavioral health and dermatology - all working together to keep your child in the game.

For the love of kids.

marshfieldchildrens.org



marshfield
children's