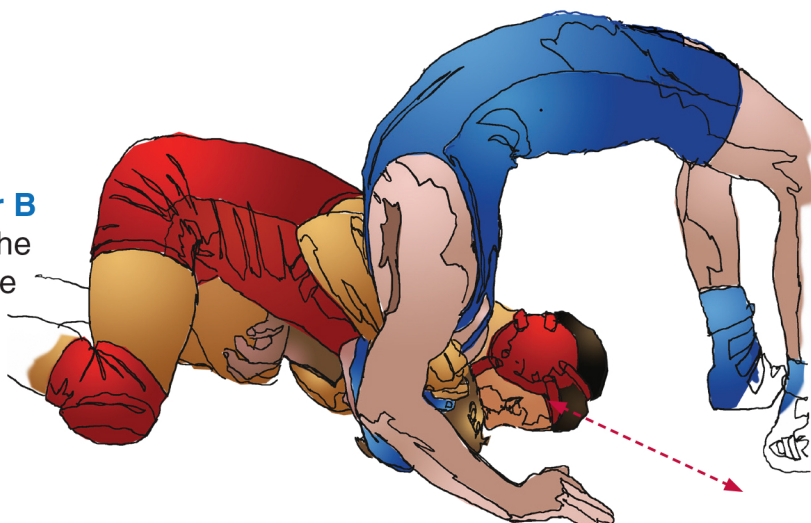
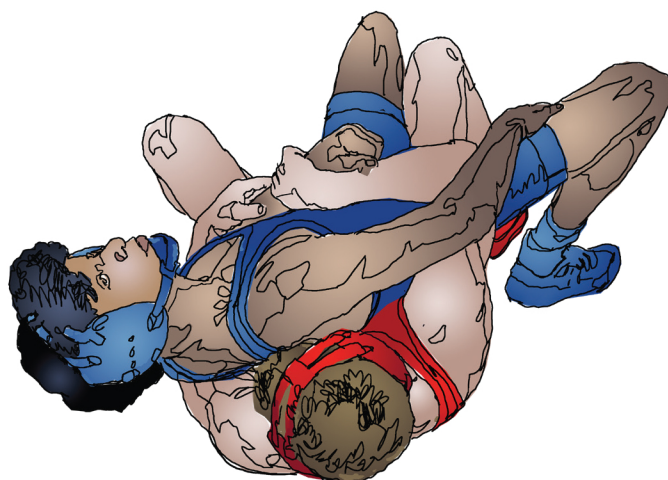
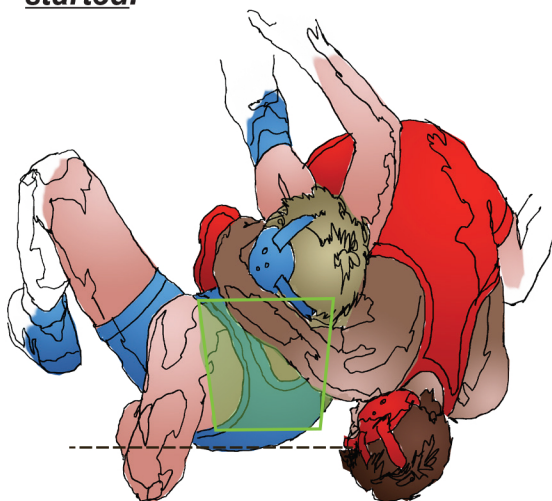


1. **Wrestler A** restrains **Wrestler B** in a high bridge. This is one of the four criteria and near-fall shall be counted.

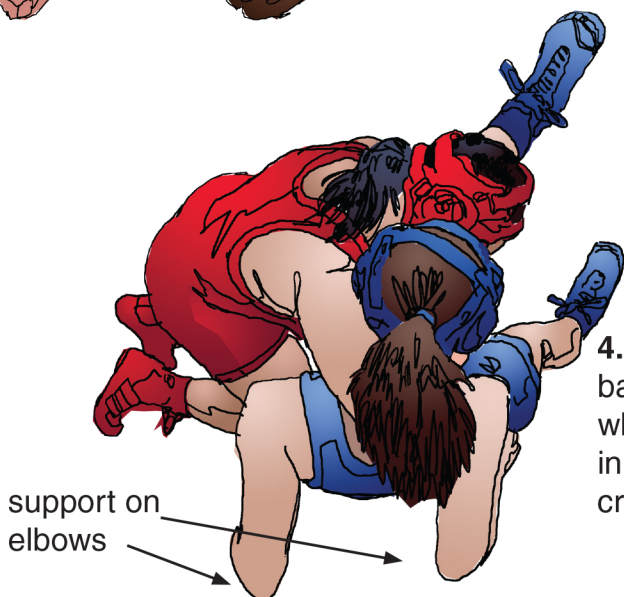


NOTE: The official must be close to protect the neck from rolling too far over top; consider potentially dangerous and slide in to physically cradle the neck

2. **Wrestler B** is posted on one elbow, above 4-inches and greater than a 45° angle do not meet near-fall criteria, and a near-fall count may not be started.



3. The intent of a **near-fall** is that the offensive wrestler is near scoring a fall. A **fall cannot be scored** while laying on the chest of the offensive **Wrestler A**. **Therefore, this situation does not meet near-fall criteria, and cannot be counted.**



4. **Wrestler B** is fighting off her back by posting on both elbows while **Wrestler A** restrains her in this position. This is **near-fall criteria**, and a count shall begin